

RESIDENTIAL **KENNELS**

QUALITY KENNELS



DOG APPROVED HOUSING

Your dog adores you! Your family is who your dog lives for!

Keep your dog safe, and well cared for without worry, with one of our kennels. We have lots of options to make sure the kennel enhances your property value and blends well with your other buildings.

Our main concern is giving you the options to keep your dog comfortable. We have everything you need to give your furry friend his own comfortable house! From flooring that is safe for his little feet, doors that open just for him, and even the optional air conditioning and heating.

We cater to all types of dog owners, whether you have one family pet or need a commercial unit for your dogs, we have a kennel that will fit your needs.

Our craftsmanship and quality construction will provide years of performance and satisfaction.

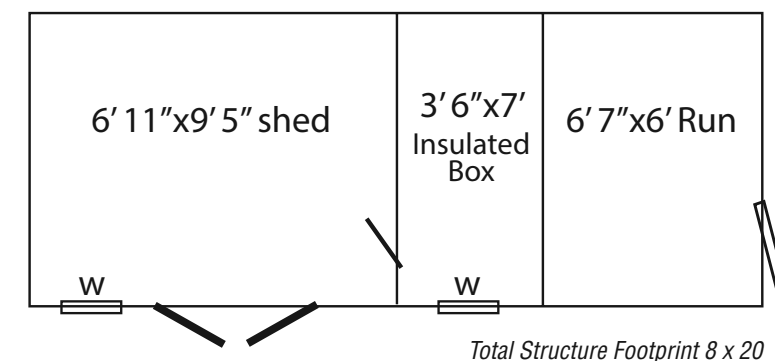
Let your dog know you love him and want to take good care of him – buy the best.



**Elite 8' x 20' Shed/
Kennel Combo**

- Gray L-P Smartside siding
- White trim
- Charcoal shingles
- Black doors

Shown with optional Elite gable vents and Z-shutters. Also available in 8 x 18 with 8 x 8 shed.

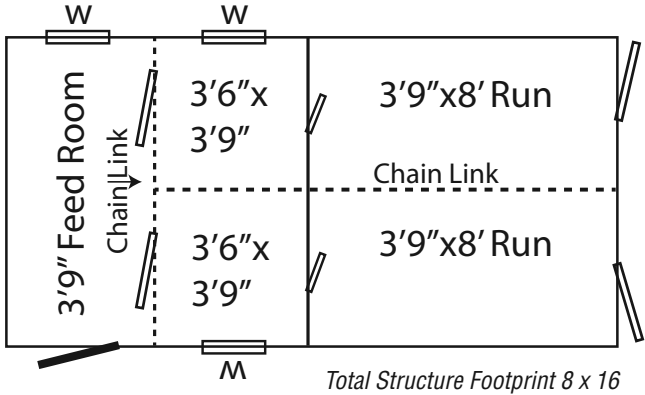




Elite 8' x 16' Double Kennel

- Gray L-P Smartside siding
- Dark gray trim
- Weatherwood shingles
- White door

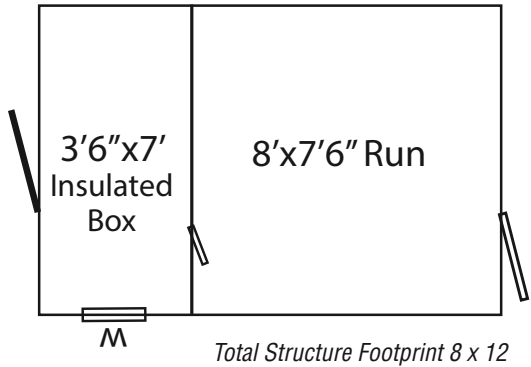
Shown with optional Elite gable vents



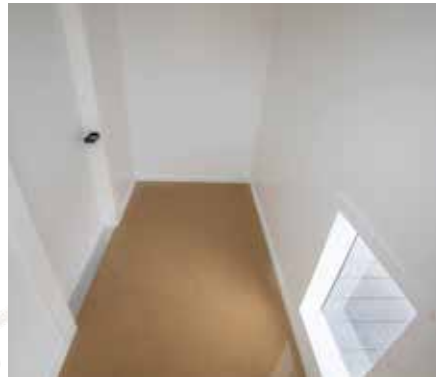
Elite 8' x 12' Kennel

- Board & Batten siding
- Cedar stain
- Forest green shingles
- Hunter green door

Shown with optional Elite gable vents, vinyl posts on run, and 11-Lite door



Rear view of shed and box



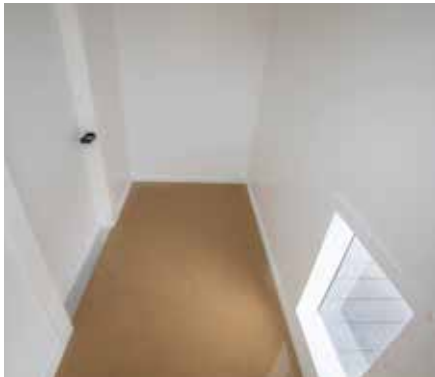
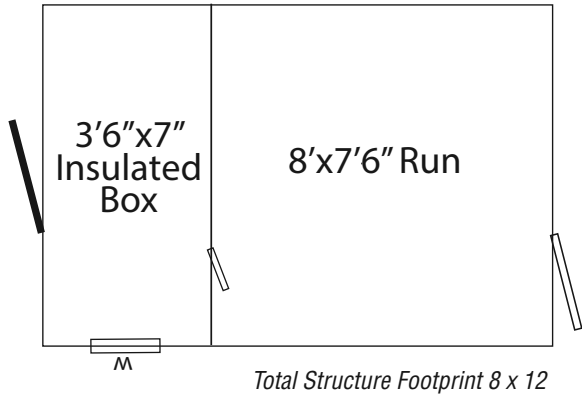
Rear view of shed and box



Elite 8' x 12' Kennel

- Red L-P Smartside siding
- Beige trim
- Beige door
- Walnut brown shingles

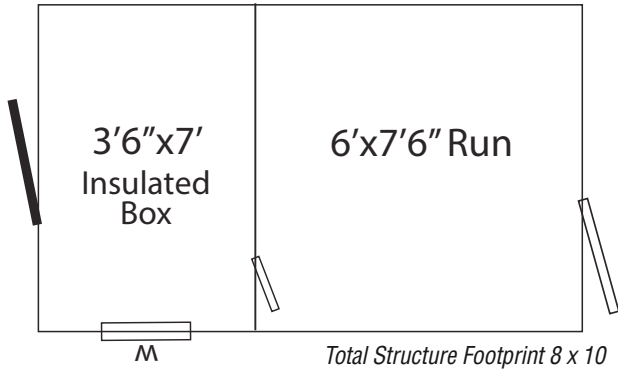
Shown with optional Elite gable vents



Elite 8' x 10' Kennel

- Navaho white L-P Smartside siding
- Buckskin trim
- Walnut brown shingles

Shown with optional 9-Lite door, octagon windows, slat shutters, interior chain link door, Elite gable vents & vinyl post covers

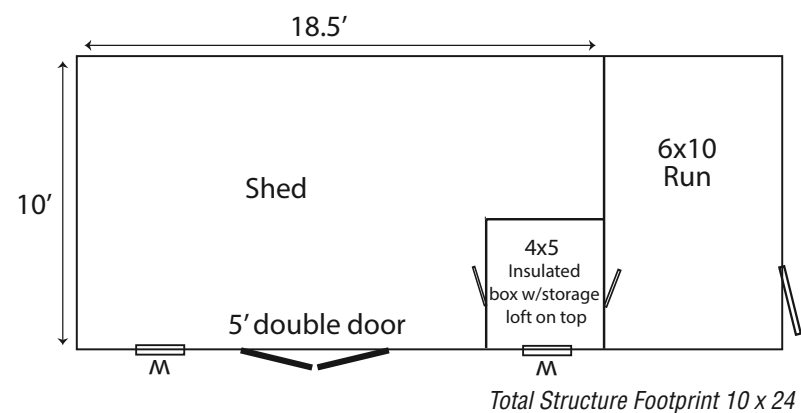




Traditional 10' x 24' Shed/Kennel Combo

- Buckskin L-P Smartside Siding
- Chestnut Trim
- Walnut Brown Shingles

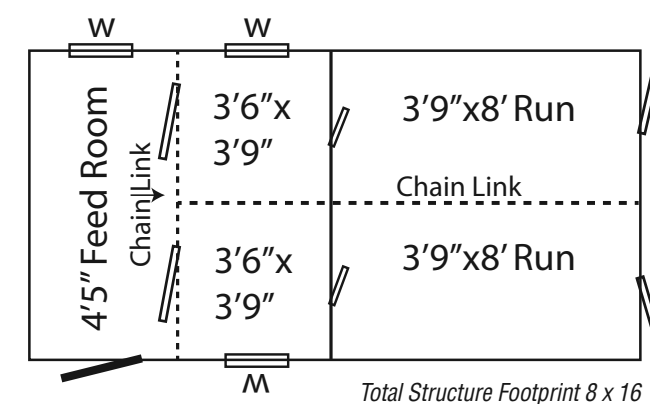
Also available in 10 x 20 and 10 x 18.
These sizes reduce the shed portion,
not the kennel.



Traditional 8' x 16' Double Kennel

- Light gray L-P Smartside siding
- Dark gray trim

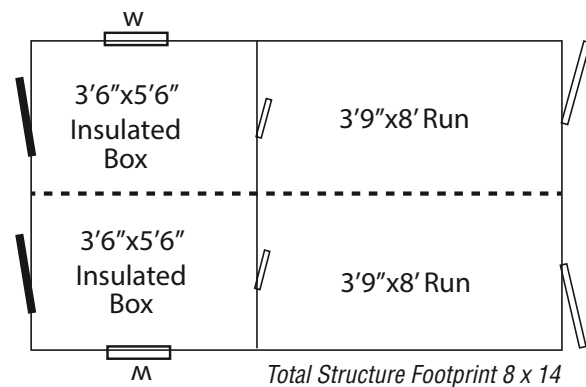
Shown with optional pewter gray metal roof





Traditional 8' x 14' Double Kennel

- Black Fox L-P Smartside Siding
- Summit Gray Trim
- Charcoal Metal



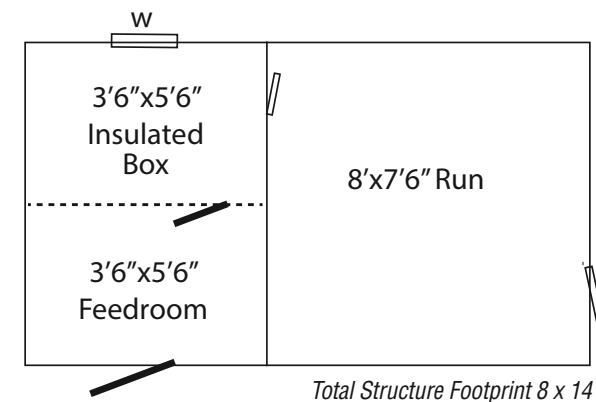
Rear view of shed and box



Traditional 8' x 14' Kennel w/ Feed Room

- Board & Batten Siding
- Walnut Brown Shingles
- Chestnut Painted Door

Shown with optional vent, 11-Lite door and feed room.



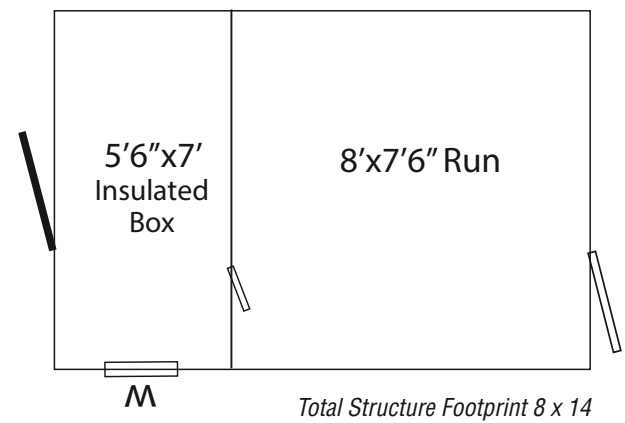
Rear view of shed and box





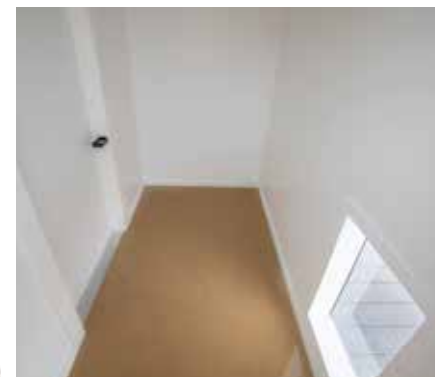
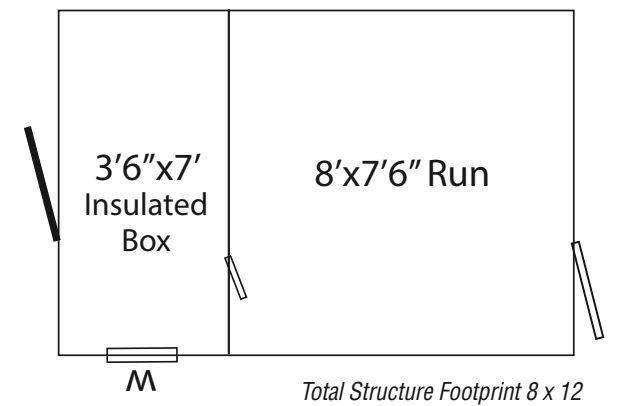
Traditional 8' x 14' Kennel

- Clay L-P Smartside siding
- Black trim
- Black metal roof
- Clay door



Traditional 8' x 12' Kennel

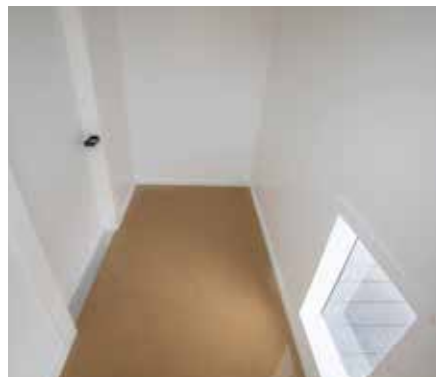
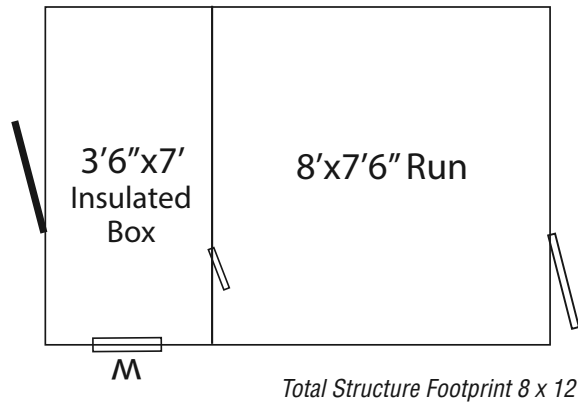
- Red L-P Smartside siding
 - Navajo white trim
 - Walnut brown shingles
- Shown with optional 11-Lite arch door.





Traditional 8' x 12' Kennel

- Board & Batten siding
- Natural stain
- Weatherwood shingles
- Chestnut color door

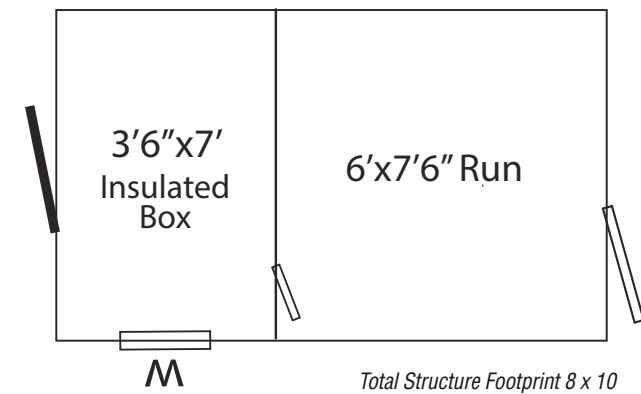


Rear view of shed and box



Traditional 8' x 10' Kennel

- White L-P Smartside siding
- Black trim
- Charcoal shingles



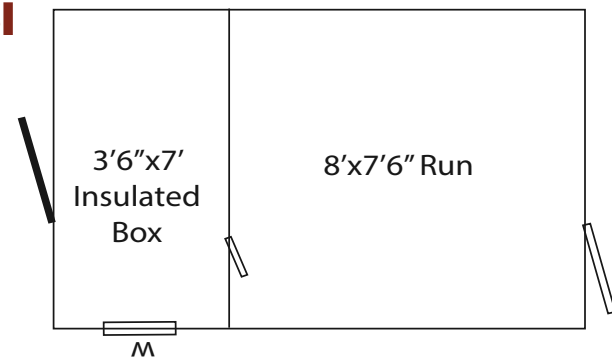
Rear view of shed and box



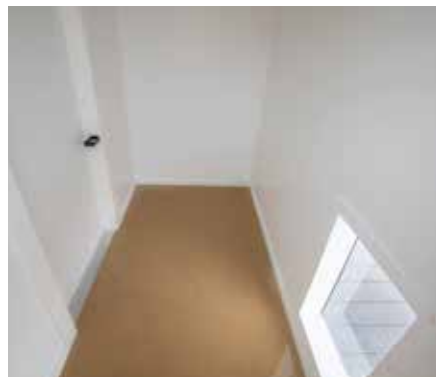
Elite 8' x 12' Shed Style Kennel

- L-P Smartside
- Chestnut urethane stain
- White trim
- Charcoal shingles

Shown with transom dormer.



Total Structure Footprint 8 x 12

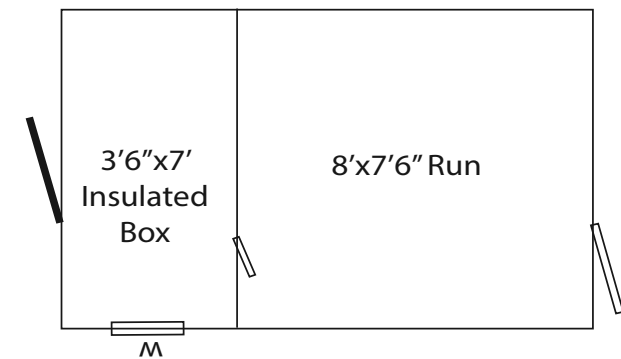


Front view of shed

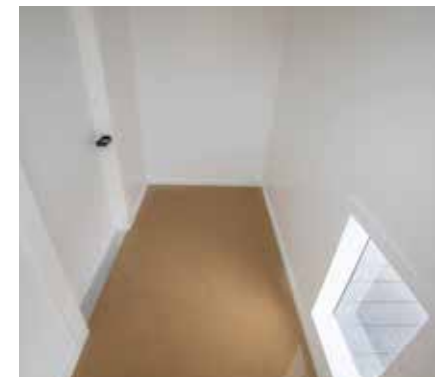
Traditional 8' x 12' Kennel

- Tan vinyl siding
- Brown trim
- Walnut brown shingles

Shown with optional vinyl shutters and optional vinyl siding.



Total Structure Footprint 8 x 12



Rear view of shed and box



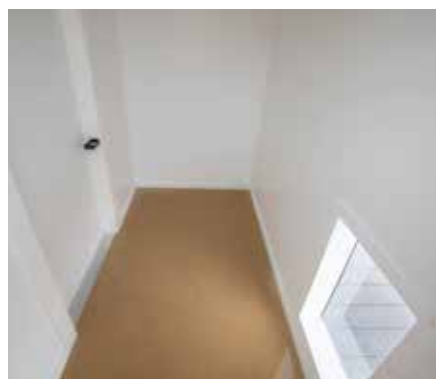
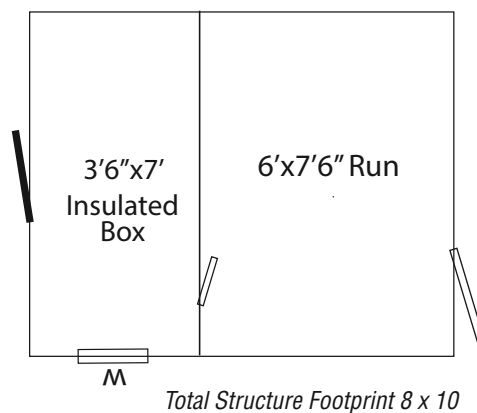


Traditional 8' x 10' Kennel

- Cream vinyl siding
- Red trim
- Charcoal shingles

Shown with optional vinyl shutter.

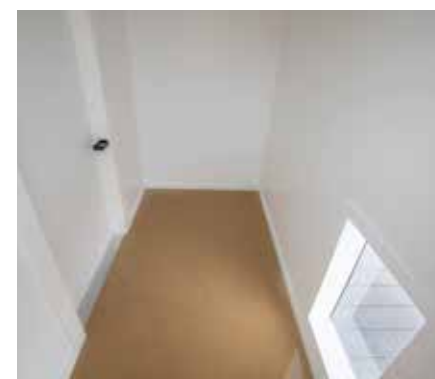
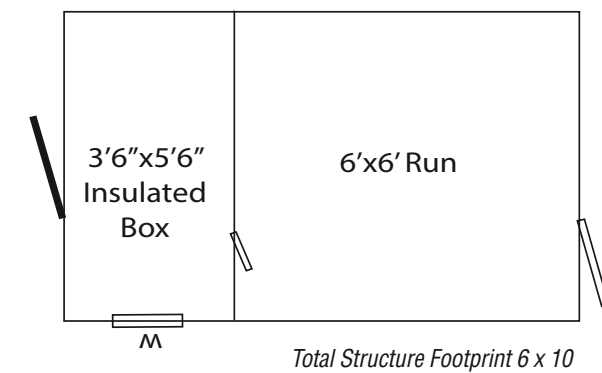
Kennels with vinyl siding come standard with 4' glass-board on outside wall and vinyl post covers



Traditional 6' x 10' Kennel

- Tan L-P Smartside siding
- Red trim
- Red metal roof

Shown with optional metal roof.

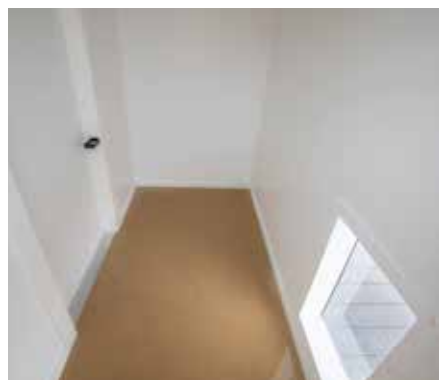
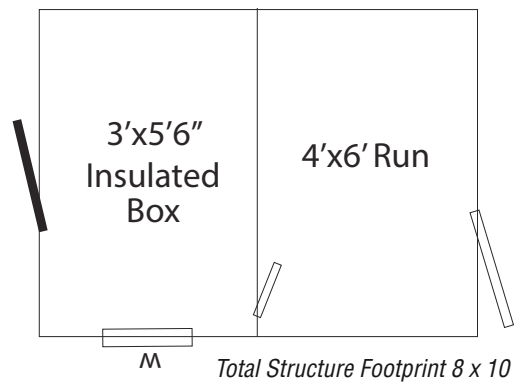




Traditional 6' x 8' Kennel

- Board & Batten Siding
- Natural Stain
- Walnut Brown Shingles
- Chestnut Color Door

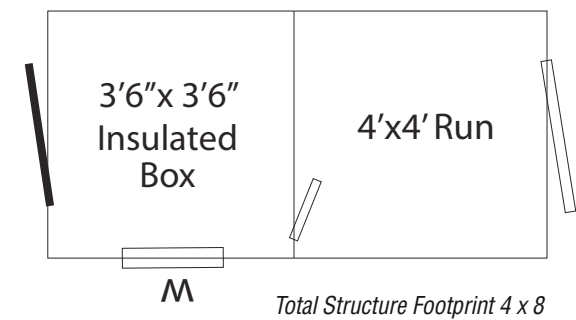
Shown with optional 9-Lite door.



Rear view of shed and box

Traditional 4' x 8' Kennel

- Lite Gray L-P Smartside Siding
- White Trim
- Weatherwood Shingles



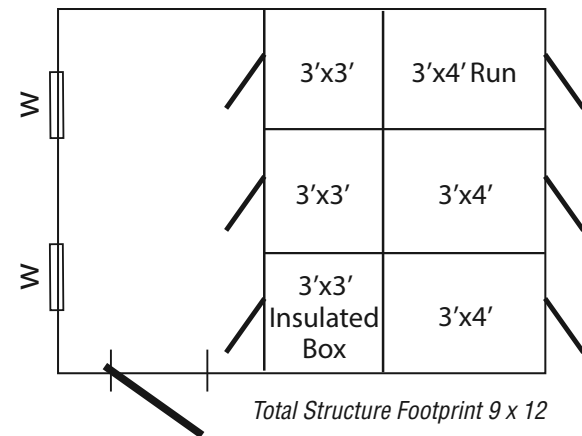
Rear view of shed and box





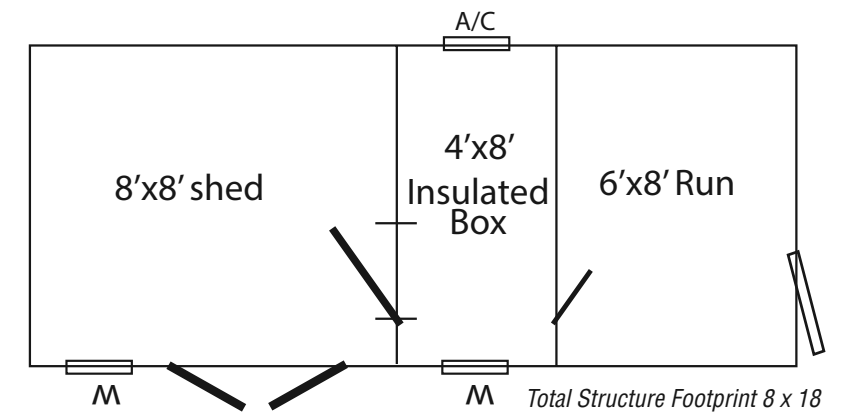
9" x 12" 3-Run Kennel

- Radiant Floor Heat
- Wash Down System
- Whelping Next
- Light Gray Vinyl Siding
- Black Trim
- Black Shingles



8' x 18' Shed/ Kennel Combo

- Vinyl Siding
- Feeder Bowl System
- A/C Unit
- Tan Siding
- White Trim
- Bronze Roof



STANDARD **FEATURES**



ELITE

- Deluxe Trim Package
- 18 x 27 Single Pane Window w/Screen
- Duratemp or Board & Batten Siding, Painted or Stained

TRADITIONAL

- Standard Trim Package
- 18 x 23 Single Pane Window w/Screen
- Duratemp or Board & Batten Siding, Painted or Stained



R-11 Insulated
w/ Trusscore Lined
Interiors



Double Doors on
Shed Kennel Combos



Poly Decking on Runs



Polyurea Floor



30 Year Architectural
Shingles



Insulated Fiberglass
Door w/ Keyed Latch



Vinyl Posts



18 x 23 Single Pane
Window w/ Screen



4' High Glassboard
on Run Wall



Plexiglas Dog Doors
w/ Molded Trim Kit



Gable Vents

ADDITIONAL FEATURES*

- P.T. Floor Joist
- LP Tech Shield Sheathing
- All Chain Link Fencing

**Not pictured*

COLOR OPTIONS

CHOOSE YOUR METAL COLORS

Bright White	Light Stone	Beige	Clay	Tan	Bone White	Ash Gray	Pewter Gray
Charcoal	Bronze	Scarlet Red	Barn Red	Colonial Red	Burgundy	Brown	Gold
Patina Green	Avocado Green	Forest Green	Evergreen	Slate Blue	Gallery Blue	Dark Blue	Black

CHOOSE YOUR SHINGLE COLORS

Charcoal	Forest Green	Nickel Gray	Walnut Brown	Weather Gray	Cedar	Williamsburg Slate	Cedar Shake (optional)

CHOOSE YOUR PAINT COLORS

White	Navajo	Beige	Lt. Gray	Summit Gray	Dark Gray	Lt. Blue	Dark Blue
Buckskin	Clay	Chestnut	Dark Brown	Avocado	Green	Barn Red	Crabby Apple
Taupe Tone	Black Fox	Roycroft Bronze	Urbane Bronze	Black			

CHOOSE YOUR VINYL COLORS (*Indicates stock colors. All other colors are non-stock.)

White*	Pearl*	Cream	Mist*	Almond	Tan*	Clay*	Olive
Gray*	Flint	Blue					

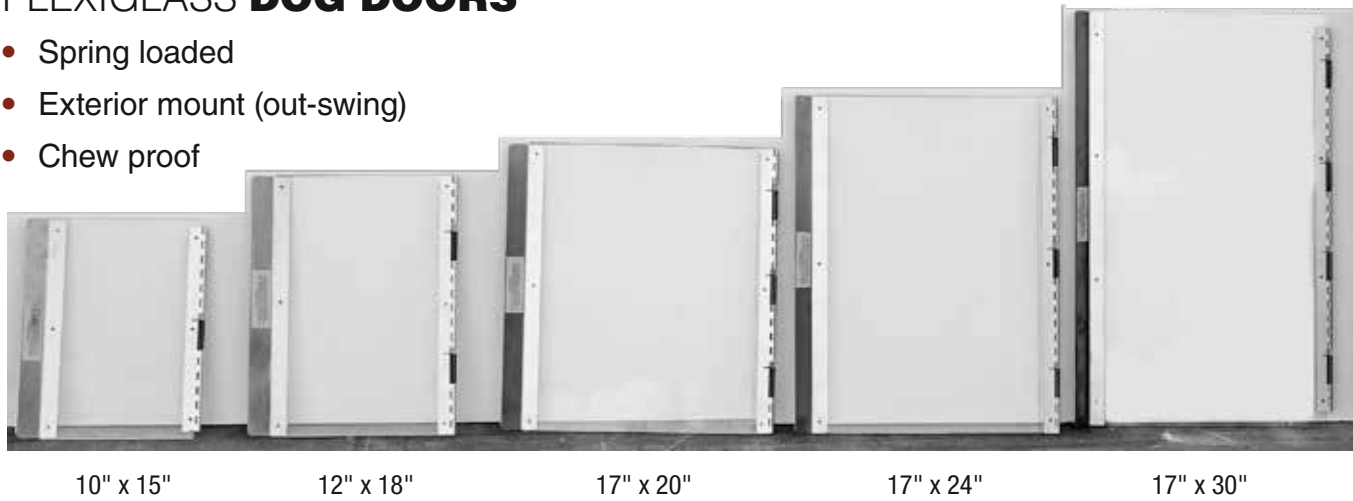
CHOOSE YOUR STAIN COLORS (*Indicates standard stain colors. Others are optional.)

Cedar*	Brown Cedar*	Mushroom*	Natural*	Rustic Cedar*	Butternut (on LP)	Chestnut Brown (on LP)	Natural Teak (on LP)
Red Wood (on LP)	Butternut (on Pine)	Chestnut Brown (on Pine)	Natural Teak (on Pine)	Red Wood (on Pine)			

OPTIONS & UPGRADES

PLEXIGLASS DOG DOORS

- Spring loaded
- Exterior mount (out-swing)
- Chew proof



10" x 15"

12" x 18"

17" x 20"

17" x 24"

17" x 30"



GUILLOTINE DOOR

The Guillotine door is used as a secondary door for locking the dogs in or out without entering the box.

Available Sizes:
17" x 20" | 17" x 24" | 17" x 30"



DELUXE DOG DOORS

- Spring loaded
- Swing in and out
- Chew proof



17" x 20"

17" x 24"

17" x 30"

PET SAFE DOG DOORS

- Flap doors swing in and out with magnetic catch



5" x 8"

8" x 12"

10" x 16"

13" x 23"

DOOR & WINDOW OPTIONS



6 Panel Pre-Hung Door
34" x 73 1/2" R-O



Screen Door Inside
Mount Entry Door



24" x 36" Single Hung
Insulated Window



These window options can be used in our standard slab door or the pre-hung door.



9-Lite



11-Lite



Vent-Lite



Vinyl Shutters



Slat Shutters



Z Shutters

OPTIONS & UPGRADES

FEEDING & WATERING



Stainless Steel Adjustable Water Nibble Bracket with Nibble

- Easily Adjustable Height
- Constant Access to Clean Water For Your Dog
- We recommend you get the stainless steel drain with this option.



Stainless Steel Feeder Bowls
Unbreakable brackets; accessible from feed alley



Stainless Steel Water Bowl
With float bowl detaches from float assembly in seconds for easy cleaning



HEATING & COOLING



Interior View



A/C Unit Installed



Exterior View



Envi Wall Mounted Heater



FENCING OPTIONS



Inside Kennel Divider Panel
4' Norlock Solid Divider Panel

- Standard Kennel; comes with all wire panels
- Chainlink panels



6-Gauge Welded Wire Panels

- Hot dipped galvanized
- Available In all sizes
- #1 solution for aggressive breed dogs



9-Gauge Chain Link

- Available In all sizes



4' High Glassboard On Run Wall
- Standard w/Vinyl Siding



Powder Coated Aluminum



Stainless Steel Channel Drain
- Makes wash down much quicker & easier

OPTIONS & UPGRADES

ELECTRICAL PACKAGE



- Electrical Package**
- 1 Light
 - 1 Receptacle
 - 1 Light Switch
 - More lights and receptacles can be added
 - Electrical box is optional



Exterior Entrance Light



Exterior Double Bulb Flood Lights

VENTILATION OPTIONS



- 16" Exhaust Fan**
- 110-V
 - Aluminum gable shutters
 - 1900 CFM 1.35 AMPs
 - Percentage timer



- 16" Exhaust Fan**
- 110-V
 - Aluminum gable shutters
 - 1900 CFM 1.35 AMPs



Gable Vents

- Draws hot air out of attic space



CUPOLAS & WEATHERVANES



Black Eagle



Black Horse



Small Black Rooster



Copper Standing Rooster



Copper Eagle



Copper Horse



Board & Batten Wood w/ Copper Top



White Cupola

KENNEL RENOVATIONS



Inside the kennel, we replaced all fencing panels with Stainless Steel panels, added 4' divider panels with S.S toppers, added guillotine dog doors and new feeding systems.



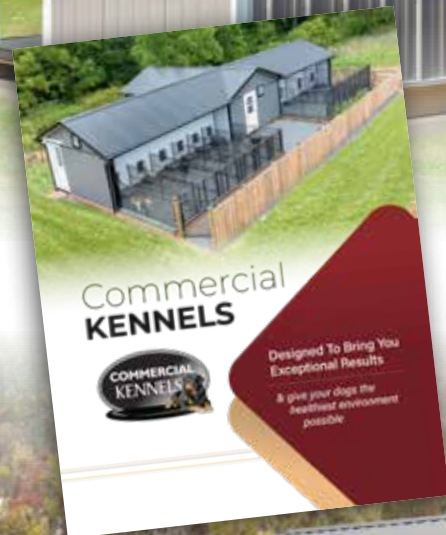
On the exterior, we replaced the runs with welded wire runs with chainlink toppers to make the runs as safe as possible.

COMMERCIAL KENNELS



NEED MORE SPACE?

Take a look our Commercial Kennel Brochure!



20 x 40 7-Run Kennel

CALL TODAY
for a **FREE** Kennel Parts
& Pet Supplies catalog!
717-435-8222



www. **The Dog Kennel Collection** .com



by Bird-in-Hand Pet Structures

470 Millwood Rd., Willow Street, PA 17584
888.318.4404 | sales@bihpet.com